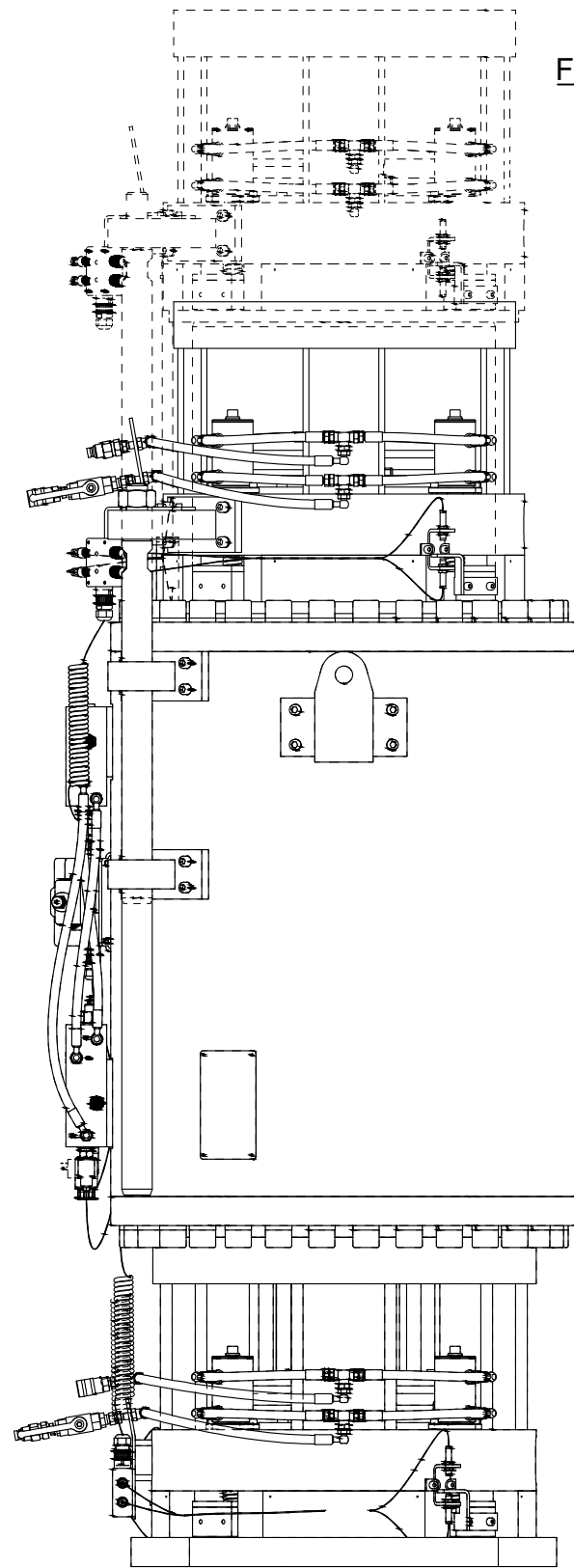
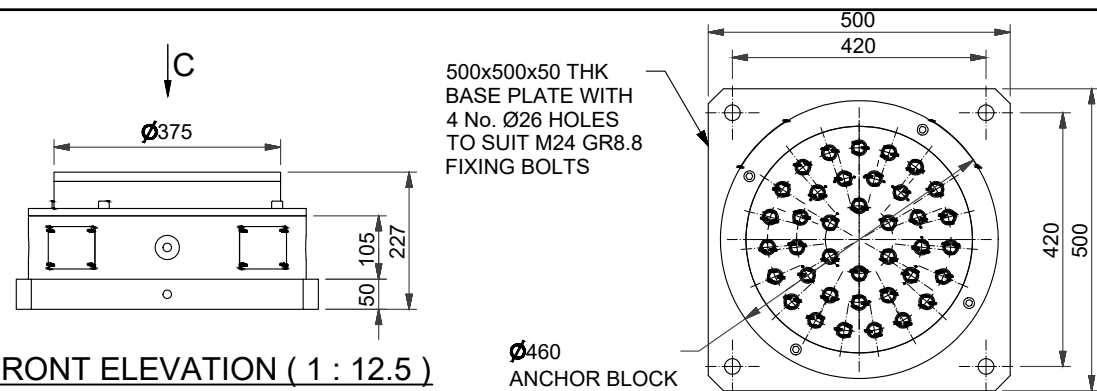


FRONT ELEVATION (1 : 12.5)

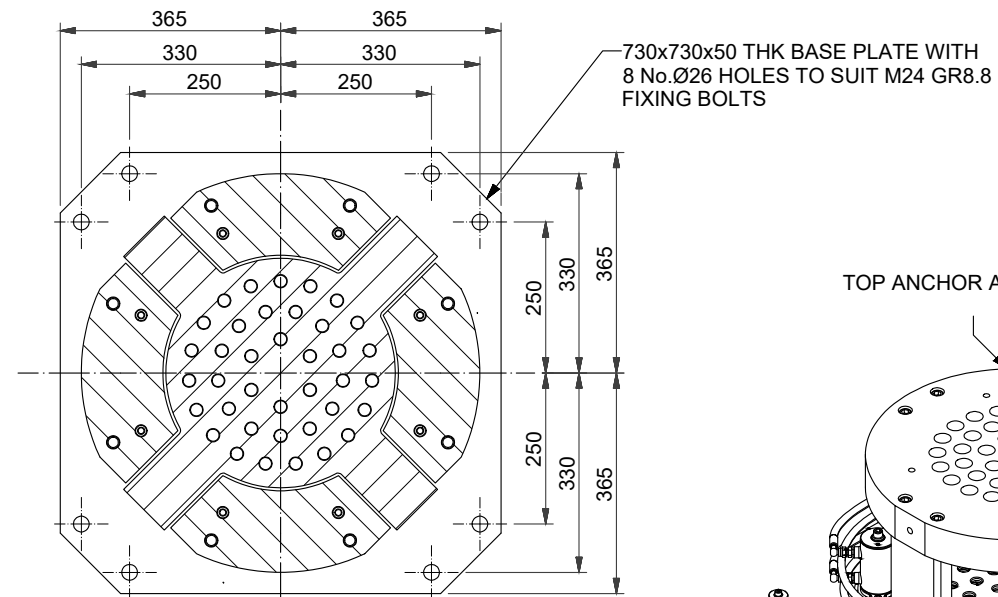


FRONT ELEVATION (1 : 12.5)



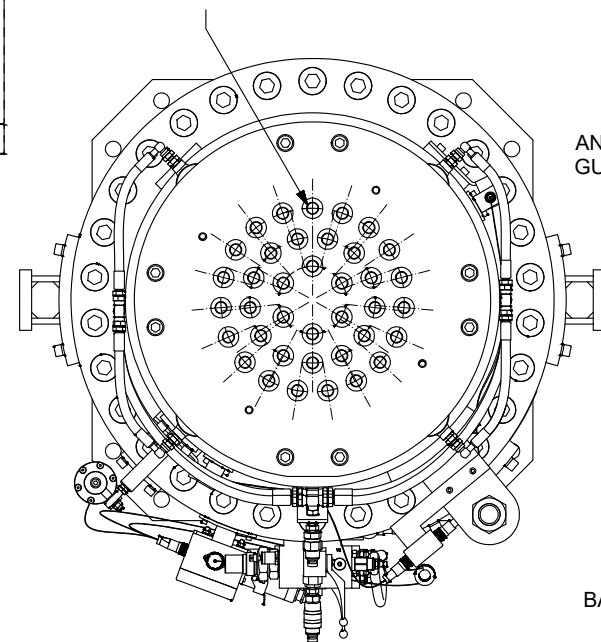
FRONT ELEVATION (1 : 12.5)

DL-S588 FIXED ANCHOR

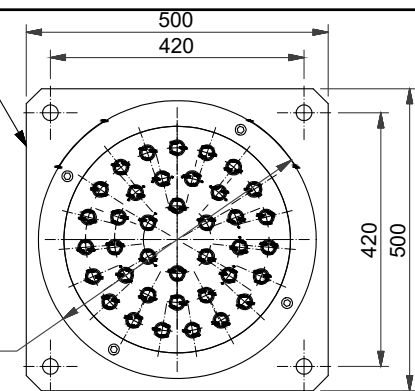


SECTION B-B (1 : 12.5)

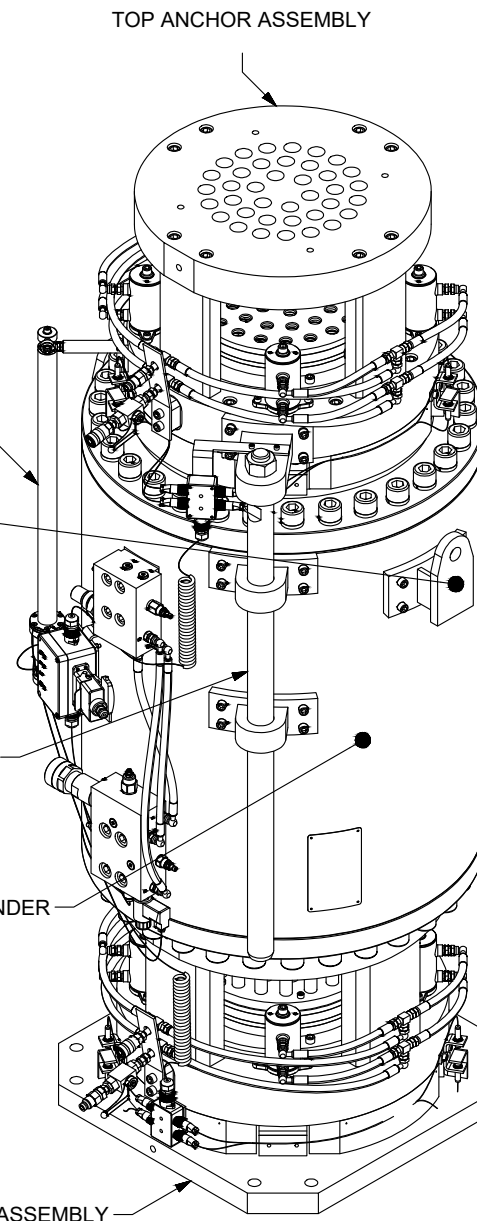
HOLES 'A'
 38 No HOLES TOTAL AS DETAILED
 19 No EQUISPACED ON 304 PCD
 13 No EQUISPACED ON 208 PCD
 6 No EQUISPACED ON 112 PCD



VIEW A (1 : 12.5)



VIEW C (1 : 12.5)



DL-S588 STRAND JACK

DO NOT SCALE

This drawing has been produced by Dorman Long Technology in accordance with the instructions of the client for their sole and specific use.

Dorman Long Technology shall not be liable for the use of any information contained on this drawing for any purpose other than that for which it was specifically prepared and provided.

Should there be any doubt regarding the interpretation of any information given on this drawing, enquiries should be directed to Dorman Long Technology at the address given below before executing such part of the works.

Copyright © Dorman Long Technology

NOTES

SPECIFICATION

SAFE WORKING LOAD	588 METRIC TONNES
WORKING PRESSURE	290 BAR
JACK TEST LOAD (1.25xSWL)	735 METRIC TONNES
MAIN CYLINDER TEST PRESS. ON EXTEND/RETRACT (1.5xWORKING PRESSURE)	435/300 BAR
CLOSED LENGTH	2170 mm
STROKE	500mm
FULLY EQUIPPED JACK WEIGHT	4504 kg
FIXED ANCHOR WEIGHT	243 kg
No. OF 18mm STRANDS	38
STRAND CABLE O.D.	322 mm

11	24.11.15	INF	ISSUED FOR INFORMATION	TJB	TEB
Rev	Date	Status	Description	By	Chkd



Project
DL-S588 STRAND JACK

Drawing Title
STRAND JACK AND FIXED ANCHOR
GENERAL ARRANGEMENT

Design Eng:	SFF	Checking Eng:	TEB
Drawn by:	TJB	Project Eng:	SAB

Scales (At A3) AS SHOWN

Original Drawing size: A3

Drawing No. PL-J600-001

INFORMATION