

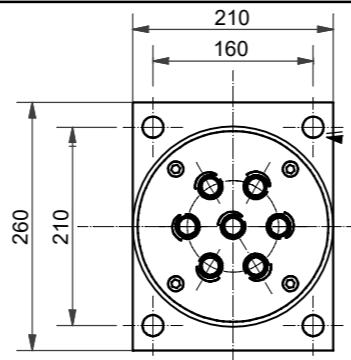
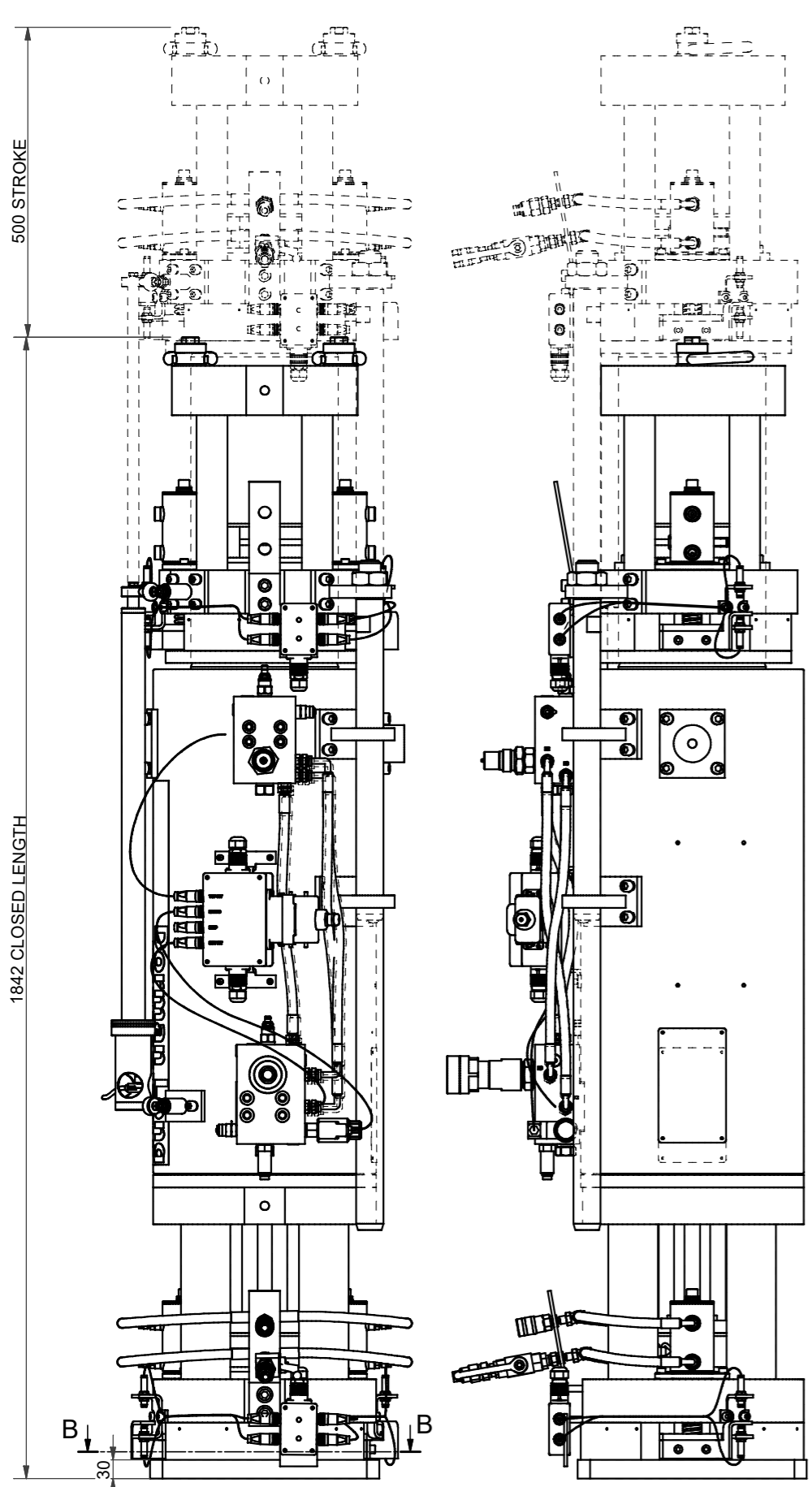
DO NOT SCALE

This drawing has been produced by Dorman Long Technology in accordance with the instructions of the client for their sole and specific use.  
 Dorman Long Technology shall not be liable for the use of any information contained on this drawing for any purpose other than that for which it was specifically prepared and provided.  
 Should there be any doubt regarding the interpretation of any information given on this drawing, enquiries should be directed to Dorman Long Technology at the address given below before executing such part of the works.

Copyright © Dorman Long Technology

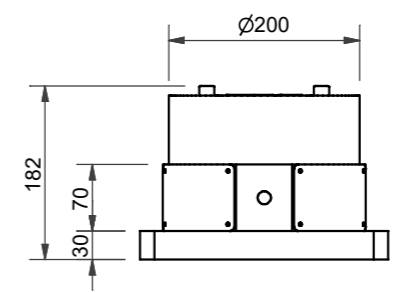
**NOTES SPECIFICATION**

No. OF 18mm STRANDS	7
SAFE WORKING LOAD	108 METRIC TONNES
WORKING PRESSURE	281 BAR
JACK TEST LOAD (1.25xSWL)	135 METRIC TONNES
MAIN CYLINDER TEST PRESSURE ON EXTEND/RETRACT (1.5xWORKING PRESSURE)	422/300 BAR
CLOSED HEIGHT	1842mm
STROKE	500 mm
TOTAL JACK WEIGHT (APPROX)	907 kg
TOTAL FIXED ANCHOR WEIGHT	44 kg
STRAND CABLE O.D.	114 mm



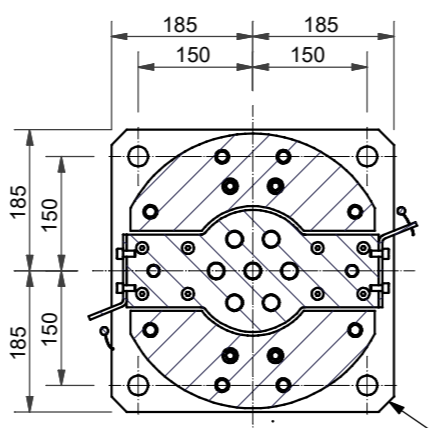
PLAN

260x210x30 THK BASE PLATE WITH 4 No Ø22 HOLES FOR M20 GRADE 8.8 FIXING BOLTS



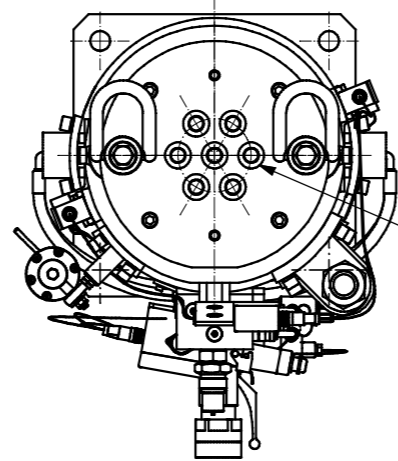
ELEVATION

**DL-S108 FIXED ANCHOR**



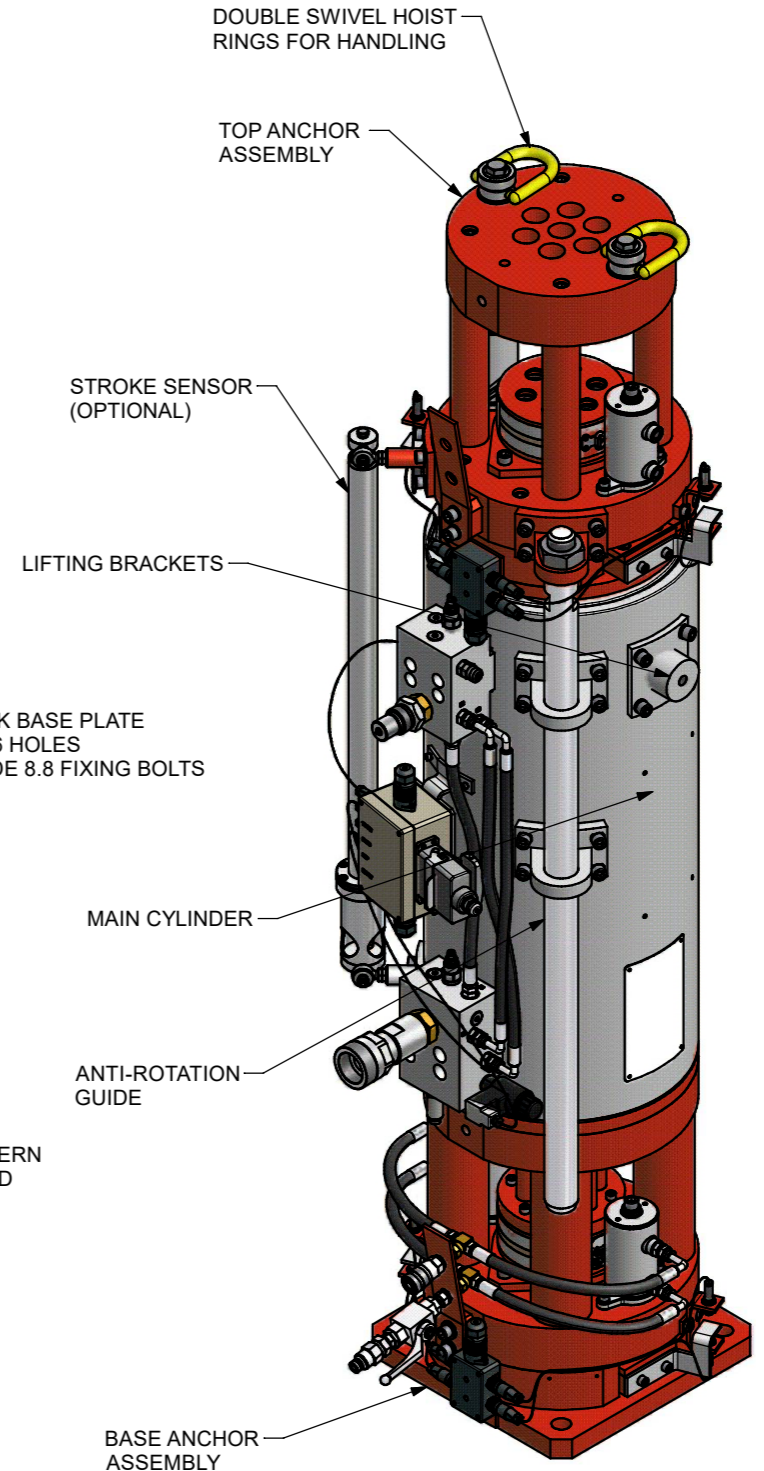
SECTION B-B ( 1 : 10 )

370x370x30 THK BASE PLATE WITH 4 No Ø26 HOLES FOR M24 GRADE 8.8 FIXING BOLTS



PLAN VIEW (1:10)

STRAND PATTERN  
6 No ON 96 PCD  
1 No CENTRAL



DL-S108 STRAND JACK ( 1 : 10 )

11	04.01.16	INF	ISSUED FOR INFORMATION	TJB	DK
Rev	Date	Status	Description	By	Chkd



Project  
DL-S108 STRAND JACK

Drawing Title  
STRAND JACK AND FIXED ANCHOR  
GENERAL ARRANGEMENT

Design Eng:	SFF	Checking Eng:	ZGB
Drawn by:	KXY	Project Eng:	SAB

Scales (At A3) AS SHOWN  
Drawing Status INFORMATION

Original Drawing size: A3	Rev.
Drawing No. DL-S108-001	11